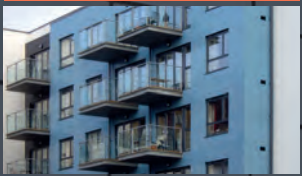


IBSTOCK

IN THIS ISSUE



Anglia Ruskin University



South Acton
Housing Scheme



Arsenal Football Club

design

FROM IBSTOCK BRICK

ANYTHING IS POSSIBLE

GLAZED BRICKS

THE COLOUR RANGE

COLOUR™ STANDARD GLOSS



Burgundy



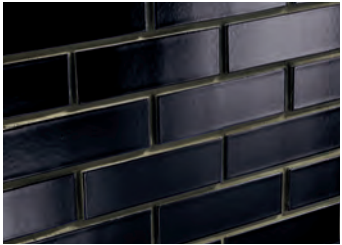
Blue



Green



Yellow



Black



London White



White

COLOUR™ SATIN



Satin Grey



Satin Sky Blue



Satin Lemon



Satin Pink



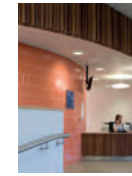
Satin Honey



Satin Sage

Available in standard metric and imperial size bricks, as well as British Standard special shapes and large format Fireborn Glazed.

PROJECTS



Anglia Ruskin University

08



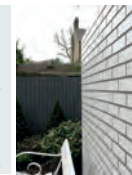
31-32 Dolben St, Southwark

10



Arsenal Football Club HQ

12



Private House, Wimbledon

13



South Acton Housing Scheme

14



Warren Apartments

16



Mint Street, Bethnal Green

18



West Hampstead Railway Station

20



Science Building

22



Belmont Preparatory School

23



Humberside Divisional Police Headquarters

24

FEATURES

26

Glazed Brick Gallery

33

Back to Basics Manufacturing | Designing with glazed bricks

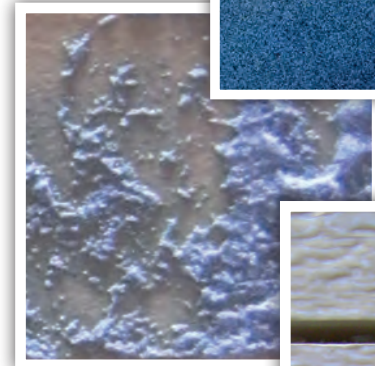
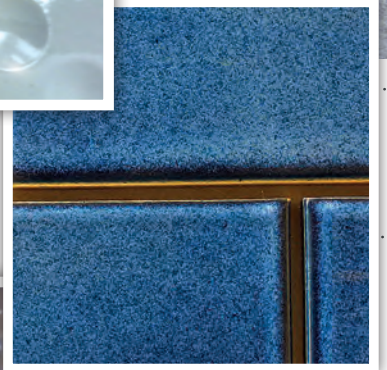
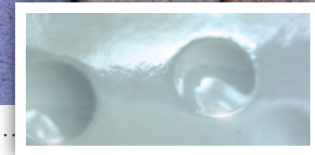
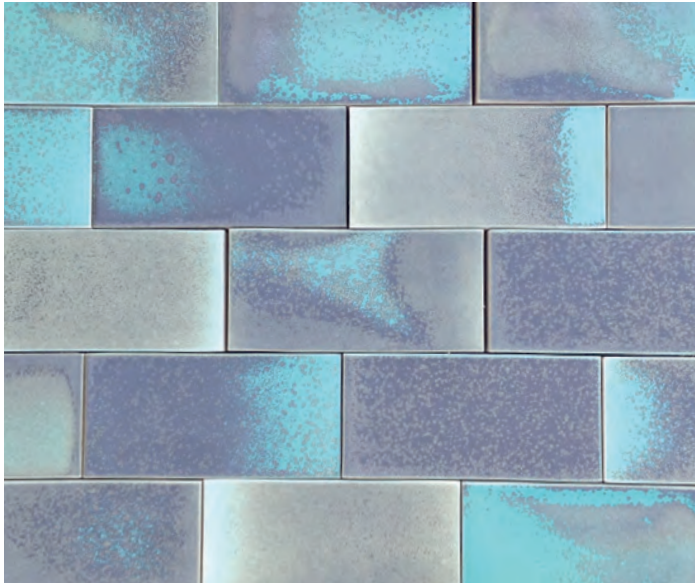
Brick Awards 2014

WINNERS

34

ENDLESS POSSIBILITIES

GLAZED FINISHES



AVAILABLE IN A RANGE OF COLOURS

HALO



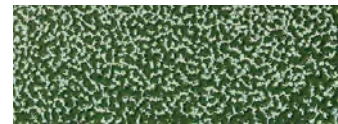
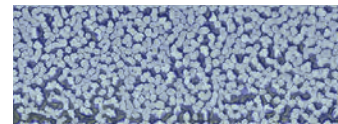
SMOOTH



TWOTONE



FROSTED

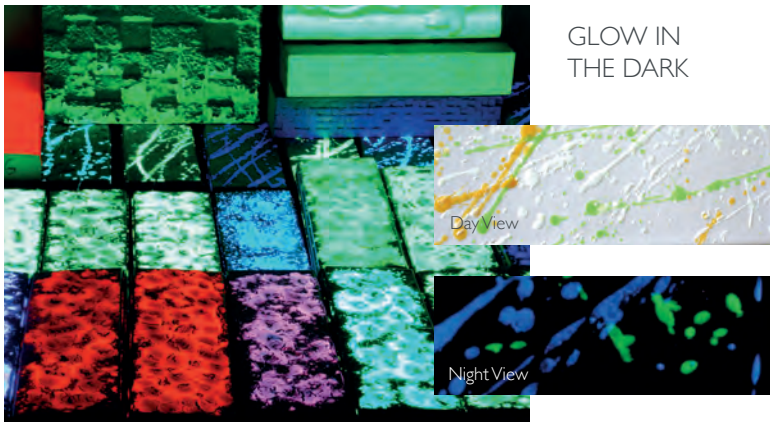




SPECIAL SHAPED GLAZED

Orchard Park, Cambridge

BLENDING WITH GLAZED

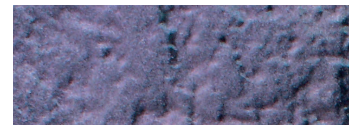
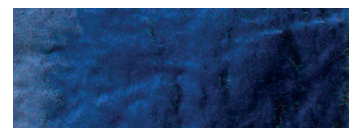


GLOW IN THE DARK

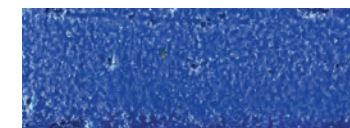
Day View

Night View

TEXTURED



SOFT MUD GLAZED





Architect
BDP, London
Telephone
+44 (0) 20 7812 8000
www.BDP.com

Anglia Ruskin University, Cambridge

Glazed slips provide a stunning contrast on external and internal circular walls at the Lord Ashcroft International Business School.

Wrapping around the courtyard at the centre of the busy campus, BDP's stunning design seamlessly integrates new and existing buildings, creating a four-storey cloister that reflects a unique sense of culture and place.



Different sized lecture pods, crowned with roof terraces, are strategically placed to break up the façade and create a modern, welcoming environment where students can study or relax between lectures.

Colour was key to lifting the design and reinforcing a young modern style. After much discussion, BDP chose to clad the pods with specially-manufactured Ibstock glazed slips in a range of vibrant colours that contrast with the

timber cladding and the Ibstock Vitessa White brickwork of the main elevation to create exciting colour highlights to both internal and external spaces.

To create smooth curves, the drums were constructed in blockwork and faced with fully-bonded glazed brick slips, stack bonded to minimise the need for cut bricks and to simplify detailing – especially on the narrow vertical pillars.

BRICK

Blue, Red,
Orange, Yellow,
Grey Glazed



Punching well above its weight, this outstanding building is a previous winner of **Best Housing Development (1-5 units)** in the BDA Brick Awards.



31-32 Dolben Street, Southwark

Copper Glazed bricks provide an unexpected shimmering surface to street elevations.

BRICK

lstock Copper
Glazed



A curved six-storey block occupying a tight urban site in the once struggling London neighbourhood of Southwark, 31-32 Dolben Street challenges convention, with its narrow curved design and street elevations of shimmering Copper Glazed brick.

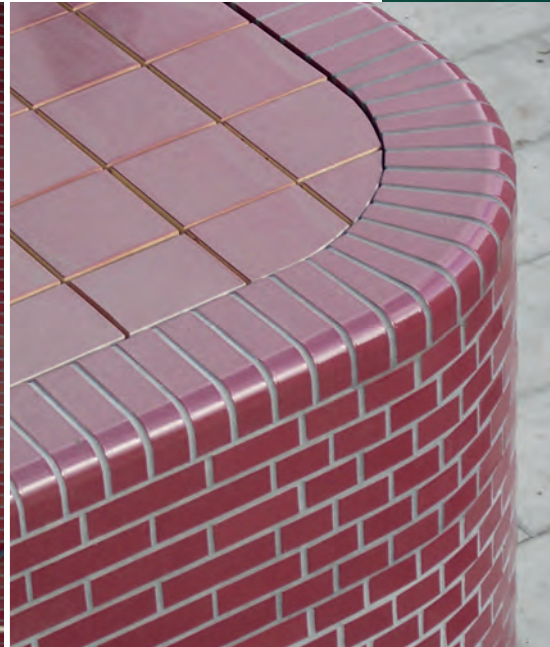
Facing onto an informal urban square, the dynamic façade of the mixed retail and apartment development is punctuated with irregularly positioned windows, set in deep reveals to reinforce the character and quality of the design.

To give the building additional presence in its mixed commercial, light industrial and residential context, architects, Association of Ideas, introduced an unexpected shimmering surface to the two dominant street elevations using Copper Glazed bricks.

Architect
Association of Ideas, Richmond, London
Telephone
+44 (0) 20 8939 2200
www.aoi.uk.com

Arsenal Football Club, Emirates Stadium

lbstock Burgundy Glazed bricks, chosen to reflect the Club's original maroon strip, contrast with the building's patinated copper skin.



Architect
Populous (formerly HOK Sport)
Telephone
+44 (0) 208 874 7666
www.populous.com

Perched above a pedestrian bridge, Arsenal FC's entrance provides a striking 'gateway' to the Club's Emirates Football Stadium.

The muted palette of glass, steel and dark blockwork is finished overall with a striking continuous patinated copper skin.

To contrast the vivid green of the copper and reflect Arsenal's distinctive historical strip, architects, Populous, chose Burgundy Glazed bricks to accent key areas around the ticket office and main entrance.

BRICK

lbstock Burgundy
Glazed

Private House, Wimbledon

White Glazed bricks give Edwardian house extension a modern aesthetic.

BRICK

lbstock White
Glazed



This Edwardian terrace in South London has been extended and completely remodelled to provide modern open-plan living for the client, a kitchenware design specialist.

To reflect the clean lines of the new interior, architects, Ade Architecture, chose White Glazed bricks to frame the impressive rear elevation,

with its feature 6-metre high glazed doors that span the first floor and new lower ground floor.

A new feature garden wall, constructed in the same White Glazed brick, serves to add balance to the scheme.

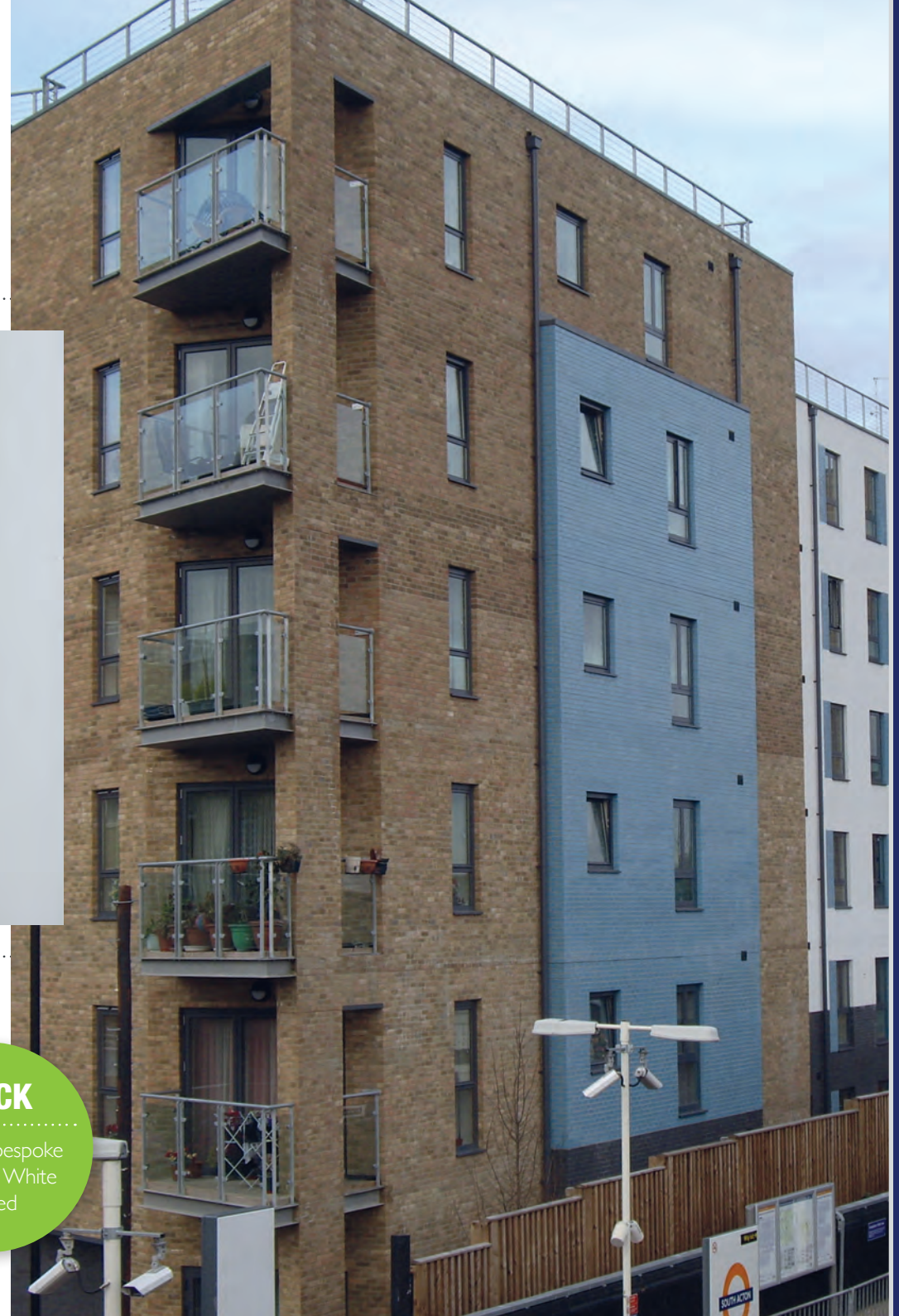
Architect
Ade Architecture, London
Telephone
+44 (0) 20 7993 8542
www.Ade-architecture.co.uk



Architects
PRP Architects
Telephone
+44 (0) 20 7653 1200
lon.prp@prparchitects.co.uk

South Acton Estate, West London

The latest phase of redevelopment for the sprawling East Acton Estate aims to create an elegant new gateway to South Acton, with a combination of elegant 8 to 10 storey residential blocks, arranged around a south facing courtyard, framing the streets and new station square.



The architect's vision was of simple buildings, with variations in character and materials to add distinction and reflect the plethora of colours and finishes of surrounding new developments. This has been achieved by the use of Ibstock bricks throughout, with Staffordshire Slate Blue Smooth and Arundel Yellow contrasted with large elevations of Glazed bricks in an exciting palette of colours.

The large panels of glazed brickwork serve to articulate the buildings, whilst breaking down their perceived mass and reinforcing the distinction between the consistent street frontage and the softer, more playful courtyard elevations.

BRICK

Sky Blue, bespoke
Pale Mint, White
Glazed

Warren Apartments, Tulse Hill

Black and White Glazed brick elevations make this stunning building glimmer in the afternoon sun.



Constructed over two and three storeys, this landmark apartment and office building sits in an established residential context, alongside Tulse Hill's historic Railway Station, in an area characterised by classic Victorian brick architecture.

The building design and materials have been chosen to articulate an urban identity, whilst clearly announcing its presence within the established context.

The façade of Black and White Glazed bricks, broken down in sections to reference the character of small scale industrial architecture, is punctuated only by areas of large single pane glass windows and rectangular, industrial scale glazing, framed in matching black and white to reinforce the pragmatic design.

The façade treatments and close attention to detail, including 1:1 design drawings and complex brick laying with minimal margin for error, give the building strong presence on the prominent site.

Architects
Groves Natcheva Architects
 Telephone
+44 (0) 20 7937 7772
www.grovesnatcheva.com

Photographs courtesy of Groves Natcheva



BRICK

lbstock Black
& White Glazed



“ Black and white glazed bricks were chosen for the industrial quality which they imbue, which was in keeping with the austere, urban environment in which the building sits. The bricks give body and density to the building, as well as an essential sculptural quality. ”

Murray Groves, Groves Natcheva

Architects
Pitman Tozer
Telephone
+44 (0) 20 3214 3255
www.pitmantozzer.com

Mint Street, Bethnal Green

Built alongside a railway viaduct in Bethnal Green, this mixed use housing scheme, for the Peabody Trust, provides a mix of affordable rent units over 5 storeys, topped by two floors of luxury private flats and penthouses.



The stunning £11 million building, which curves in line with the railway viaduct, is inspired by the simple design of Peabody's original 1860's schemes, with a limited palette of materials and just the occasional decorative flourish. Cantilevered and recessed storeys and large windows break up the visual mass of the building, which is characterised by the 'playful' use of brickwork to all elevations.

On Mint Street, overlooking the railway, Mint Glazed bricks have been employed to the ground and first floors to create a distinctive base, contrasting with the Staffordshire Blue Brindle Smooth bricks to the four storeys above, which cantilever out beyond the line of the base, emphasising the horizontal nature of the street elevation. The clever use of recessed brick banding serves to accentuate the curve of the building.

To the north western elevation, overlooking the courtyard and play area, the façade is softened by the use of Pearl Smooth White, echoing the tradition of light brickwork to lightwells and internal courtyards.

BRICK

Ibstock Mint
Glazed



West Hampstead Station

Glazed bricks locate the building and integrate the approach to the main concourse.

BRICK

Ibstock Umbra
Sawtooth Glazed
graduated shades of
bespoke Green



Alongside an avenue of protected lime trees, West Hampstead's new Thameslink station is located away from the main street frontage and partially obscured from view.

To improve visibility and provide a public approach, the existing sloping embankment has been levelled to make way for a 100 metre linear pavement, backed by a 2 metre high palisade wall.

Inspired by the foliage of the adjacent lime trees, architects, Landolt + Brown, chose Umbra Sawtooth Glazed bricks, in various shades of green, to create a strikingly rich texture for the wall and link it seamlessly into the main building concourse.

At night, luminaires concealed in the parapet gently wash the wall with light and create a striking three-dimensional backdrop.

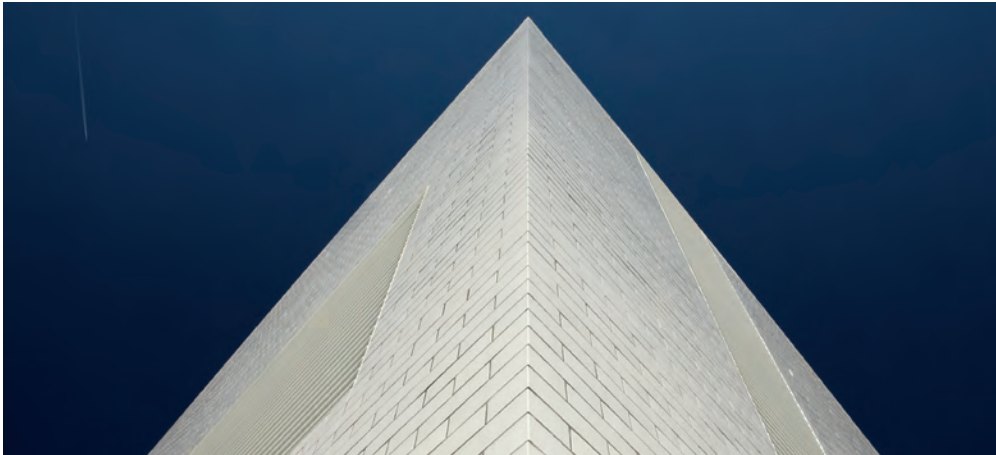
Architects
Landolt + Brown, London SE1
Telephone
+44 (0) 20 7357 9547
www.landoltandbrown.com

Landolt + Brown's pioneering design and brickwork ensured this project first place in the annual BDA Brick Awards for the most Innovative Use of Brick and Clay Products.



Science Building, Stroud

Pure white glazed bricks protect the structure and define the building's function.

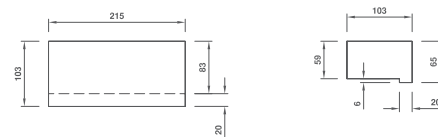


The futuristic lines of this distinctive building help define its use as a workspace for one of the country's leading artists.

With external wall design dictating an outer leaf of just ½-brick thickness and the client requiring high quality finishing and detailing, Ibstock worked with the architect to provide special glazed bricks to unusually tight dimensional and colour tolerances.

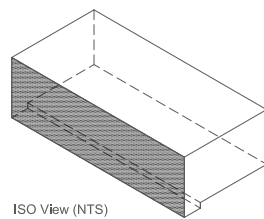
To produce the quality of aesthetic required, the standard 10mm brick joint was rejected in favour of a demanding 4mm joint, with all stretcher bricks manufactured 'pistol' format with 12mm bed joints at the rear to accommodate wall ties.

The versatility of the glazed bricks is clearly demonstrated in the variety of formats required, with special angled bricks for the pointed end of the building, precast copings, glazed headers for corners and jambs and a range of special sizes to accommodate the different design features.



Plan View

Side View



ISO View (NTS)

Architects
Designscape
Telephone
+44 (0) 1225 858 500
www.dscape.co.uk



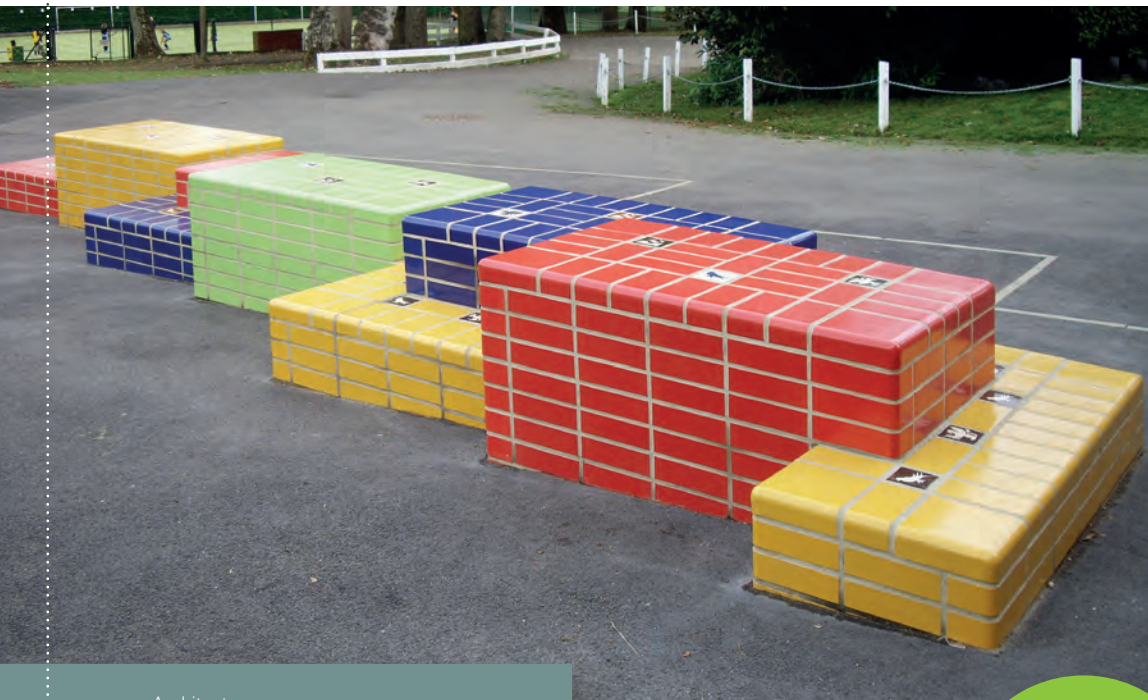
BRICK

Ibstock White
Glazed

Belmont Preparatory School, Mill Hill

Architect, Maria Gasparian, created this colourful bench in Glazed bricks to mark the centenary of the school.

Red, Blue, Yellow and Green Glazed bricks, chosen to represent the different Belmont School houses, are bonded in an interlocking puzzle composition to express interaction and reflect the varied multicultural backgrounds of the Belmont students. Inserts of hand-made tiles feature parts of the school crest and other school motifs.

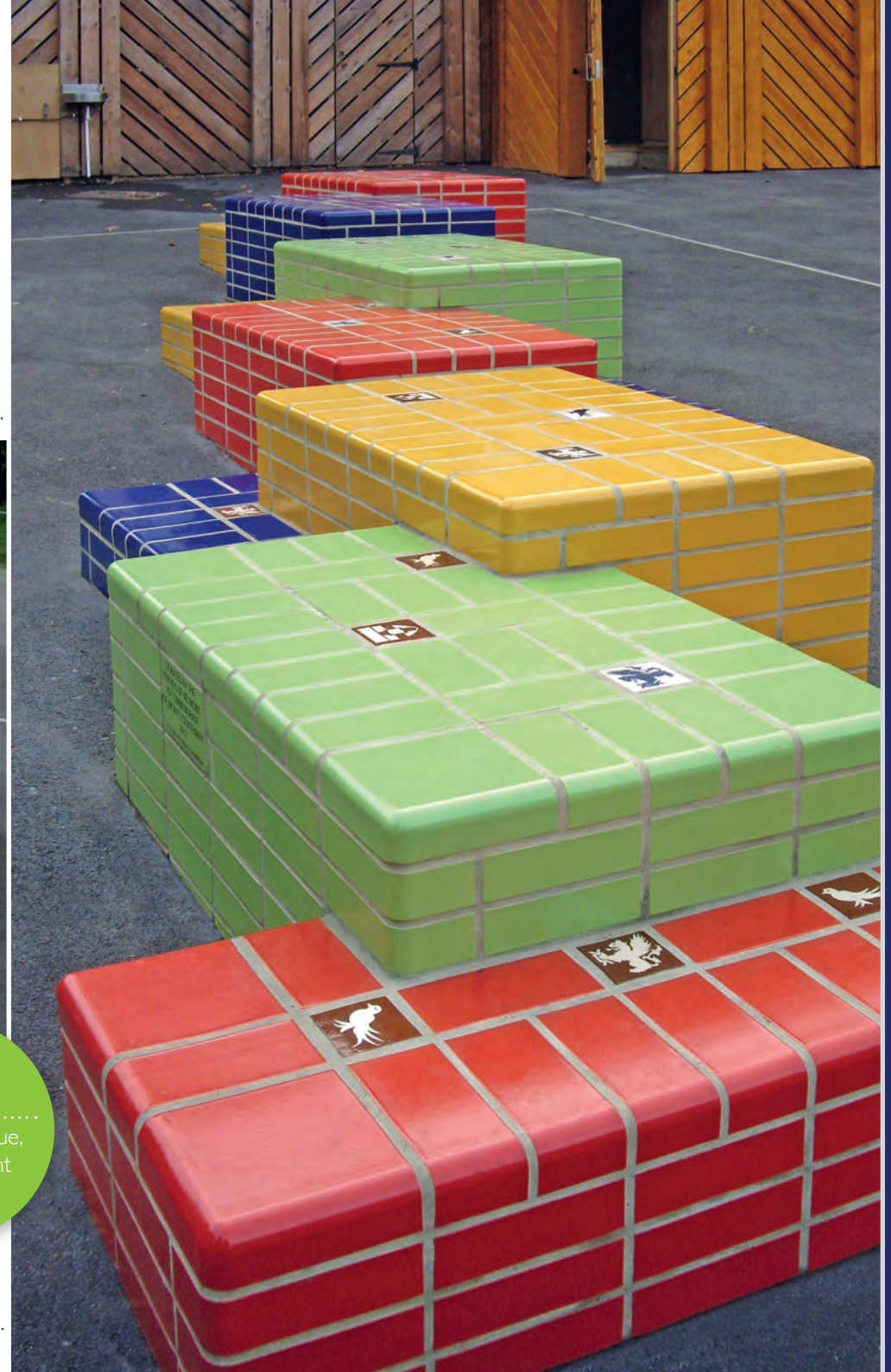


Architect
Maria Gasparian

A popular meeting point during school breaks, the bench is designed in stepped format on a sloping site, with levels comfortable for all ages. Bullnose bricks at the edges help to create an exciting visual and ensure additional safety and comfort for children using, mounting and dismounting the bench.

BRICK

Lime, Yellow, Blue,
bespoke Bright
Red Glazed





Humberside Divisional Police Headquarters, Hull

On a former brownfield site on the edge of Hull city stands the new Headquarters building for Humberside Police.

Including a state-of-the-art 40 cell custody suite and a 2000m² central storage facility that consolidates the force's storage requirements in a single location.



Architects
Jacobs UK
www.jacobs.com

An artist-designed patterned wall, created using various colours of Glazed Fireborn large format bricks, screens the custody and storage facilities and forms an attractive public plaza to the building's entrance elevation.

BRICK

Burgundy, bespoke
Orange, bespoke
Blue and 3 bespoke shades
of Grey Glazed
440 x 215mm



Glazed Brick Gallery



Tressilian Terrace, Cardiff

BLUE GLAZED

Orchard Park, Cambridge

AQUA MARINE, LIME, BESPOKE YELLOW GLAZED

Abertillery Car Park, Gwent

BLACK GLAZED FIREBORN 215 X 215MM



Rathmines Square, Dublin

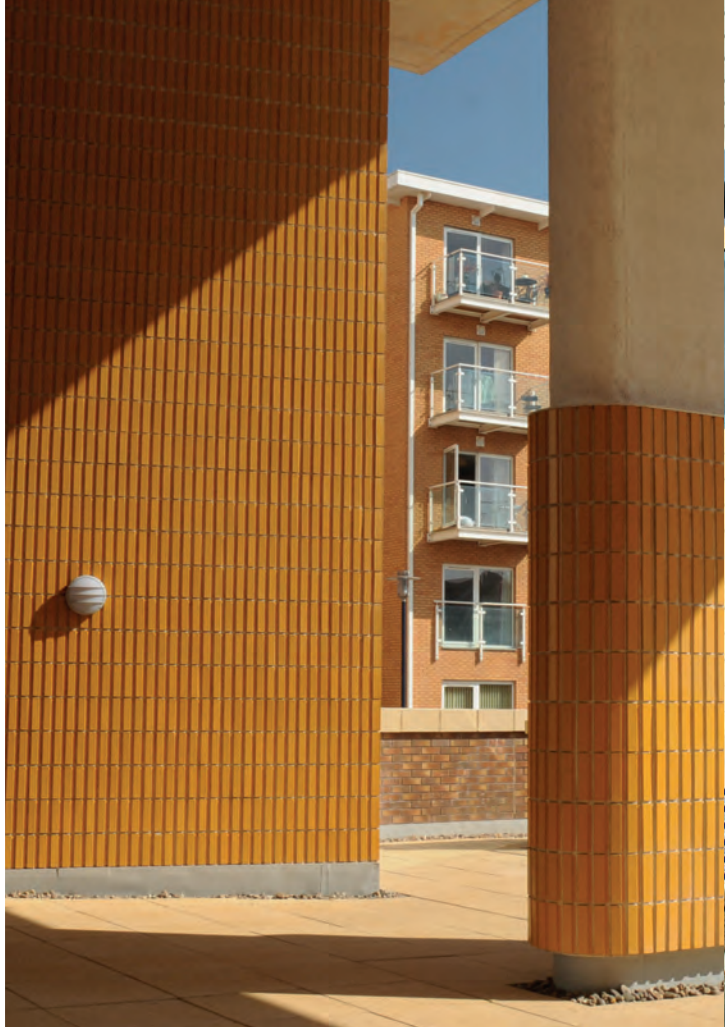
LONDON WHITE GLAZED



Carnaby Street, London

WHITE GLAZED

Glazed Brick Gallery



Saxon Court & Roseberry Mansions, London

BESPOKE GREEN UMBRA SAWTOOTH GLAZED

Century Wharf, Cardiff

BLUE, BURGUNDY, YELLOW, GREEN GLAZED



International Valves, Saxam

BLUE GLAZED



Gateacre & Hope Schools, Liverpool

MINT, YELLOW, LIME, IODINE, AQUA MARINE, BESPOKE COLOURS IN RED, VIOLET, PINK, PURPLE AND BLACK GLAZED

Glazed Brick Gallery



Morrisons Superstore, Willenhall

GREEN & OLIVE GREEN GLAZED

Bandstand, Kelvin Grove Park, Glasgow

WHITE GLAZED

The Ark Church, Radcliffe

BESPOKE CLOVER GREEN & BESPOKE SUMMER BLUE GLAZED



Stoke-on-Trent Bus Station, Staffordshire

DARK GREY GLAZED



Castlemilk Swimming Pool, Glasgow

FIREBORN BLUE GLAZED 215 x 215mm

Glazed Brick Gallery



Kilorglen, County Kerry

BLUE GLAZED



Foleshill Library extension, Coventry

LONDON WHITE, YELLOW, BLUE, LIME, AQUA MARINE GLAZED



Social Housing, Renfrewshire

IODINE & BLACK GLAZED

Back *to* basics

QUALITY THROUGH AND THROUGH

Ibstock glazed bricks are manufactured from ultra-pure clays, specially selected for their high quality and unique properties. Our state-of-the-art manufacturing technology and techniques ensure at every stage that the finished products attain the highest possible standards of performance and finish, in order to meet customers' quality expectations.

DESIGNING WITH GLAZED BRICKS

Whilst glazed bricks can provide an almost endless range of unique and eye-catching finishes and textures, they are just as easy to design with, and install, as normal bricks, provided you follow a few basic rules.

LET THE BRICKS BREATHE

...glazed bricks have an impervious finish, so the face will not breathe. It's essential to include weep holes, vents and cavity trays - and ensure cavities are kept clear during construction.

HANDLING AND INSTALLATION

Care should be taken when handling, stacking and installing glazed bricks, as it is possible to crack or otherwise damage the glazed surface and thus impact the performance and appearance of the brick through inappropriate handling and storage. (Refer to Ibstock Technical Information Sheet C3 for further information).

ALLOW FOR SHADE VARIATIONS...

...all glazed products exhibit slight shade variations, so blend the bricks from a minimum of three pallets.

Site cutting is not advised as this will affect the integrity of the glaze. If required, bricks can be cut to order during the manufacturing process, prior to glazing. Special snapped bricks are also available on request.

Follow the installation guidance in BS EN 1996 and PD6697. Where possible lay bricks with perforations vertical to achieve maximum unit and bond strength (laying with perforations horizontal will significantly reduce the compressive strength of the bricks).

Under normal circumstances use a designation (ii) mortar mix (1: ½:4 ½ cement.lime.sand, or equivalent) or (iii) (1:1:5 or 6). Lay bricks in a bed of mortar and full - fill perpend.

DO NOT use sealers on mortar joints or waterproofing agents in mortar.

JOINTS AND TIES

Use nominal 10mm thick joints. Thinner joints may be used, depending on mortar characteristics, but may require face-fixing of ties.

It's normal to use flush joints, although curved recessed (bucket handle) joints may be used.

Ensure that the unglazed bed face is covered with mortar - white cement is often used.

Include movement joints at normal centres for clay products - centres may be increased if bed-joint reinforcement is used.

Use normal wall tie spacings, in accordance with PD 6697.

STACK BONDING

Where stack bonding is used, stainless steel ladder-type bed joint reinforcement, laid in accordance with manufacturers' instructions, should be used to ensure adequate load distribution and bonding, and ties should be spaced at 225mm vertically and 600mm horizontally.

REFURBISHMENT AND RESTORATION

Ibstock's Bespoke Service will match the colour of virtually any existing glazed brick surface. New glazed bricks can often be made available in relatively small lots for restoration and refurbishment purposes.

DESIGN ADVISORY SERVICE

Ibstock's free design advisory service offers further advice on the specification and use of glazed bricks. This service is available by contacting **0844 800 4576**.

REFER TO IBSTOCK TECHNICAL INFORMATION SHEET C3 (GLAZED BRICK – HANDLING & LAYING GUIDELINES), FOR FURTHER INFORMATION



Dalkey Avenue, Dublin

Architect: de Blacam and Meagher **Product:** Ivanhoe Cream, Cooksbridge Yellow, Precast Arches

BEST INTERNATIONAL PROJECT

House in Wapping

Architect: Chris Dyson Architects **Product:** Coleridge Ashdown Yellow Multi

BEST HOUSING DEVELOPMENT – 1 TO 5 UNITS



Abode, Great Kneighton

Architect: Proctor and Matthews **Product:** Ivanhoe Cream, Himley Ebony Black

BEST HOUSING DEVELOPMENT - 26 UNITS +



Eton College

Architect: John Simpson Architects **Product:** Grosvenor Light Red Multi

BEST CRAFTSMANSHIP



Reading Station

Architect: Grimshaw Architects **Product:** Bespoke Blend

BEST OUTDOOR SPACE



Bentley Priory

Architect: Clague Architects
Product: Leicester Multi Cream, (shown), Heritage Red Blend

Trumpington Meadows

Architect: Allies and Morrison **Product:** Leicester Multi Cream

Horizons

Architect: Chris Dyson Architects **Product:** Coleridge Yellow Multi

VOLUME HOUSEBUILDING AWARD – BARRATT HOMES

WINNER

IBSTOCK

GREAT VALUE,
GREAT QUALITY,
GREAT SERVICE.

Ibstock Brick Limited

Leicester Road, Ibstock,
Leicestershire, LE67 6HS
t: 01530 261999
f: 01530 257457
e: enquiries@ibstock.co.uk

www.ibstock.com

Ibstock Sales Office:
0844 800 4575

Design & Technical Helpline:
0844 800 4576

Sample & Literature Hotline:
0844 800 4578

Special Shapes and Brickwork
Components Sales Office:
0844 736 0350



Published by:

Ibstock Brick Ltd., Leicester Road,
Ibstock, Leicestershire, LE67 6HS

Editor: Paul Smith

Important information about CE MARKING

From 1st July 2013 it is mandatory for any construction product, covered by a harmonised European Standard (hEN) containing a 'ZA' annex, to carry a Declaration of Performance (DoP) and a CE mark.

Standard format clay brick and pavers have been covered by hENs since 2003 and Ibstock bricks have been CE marking since then.

Although bespoke and 'one off' special products will not fall under the scope of the hEN and require CE marking, Special Shaped bricks generally will and must carry the CE marking.

Further information and Declarations of Performance can be found at:

© Ibstock Brick Limited 2015

Ibstock
Building
Products

Building a family of exceptional brands

NEXT TIME IN

design...

IBSTOCK TECHNICAL SOLUTIONS

Practical ideas and solutions to create great brickwork.

SIGN UP FOR THE NEXT ISSUE

email design@ibstock.co.uk

